

Term 2 Week 7

13<sup>th</sup> June 2014

# WHALER NO 9

Website: [www.mosmanpublicschool.com](http://www.mosmanpublicschool.com)Email: [mosman-p.school@det.nsw.edu.au](mailto:mosman-p.school@det.nsw.edu.au)

Phone: 9969 9325

Fax: 9968 1324

## Dates to Remember

	Mon	Tues	Wed	Thurs	Fri
Wk 8	16	17 Spelling Competition	18 Writing Competition	19	20 PSSA
Wk 9	23	24	25	26	27
<b>HOLIDAYS - 28<sup>th</sup> June to 14<sup>th</sup> July (Monday 14<sup>th</sup> - Staff Development Day – Pupil Free)</b>					
Term 3 JULY Wk 1	14 STAFF DEVELOPMENT PUPIL FREE DAY	15	16	17	18 PSSA State X-Country Carnival
Wk 2	21	22	23 OC Test	24 Yrs 3-6 Athletics Carnival	25
AUG Wk 3	28	29 English Competition	30	31	1
Wk 4	4	5	6	7 Life Education Wet weather back up for Yrs 3-6 Athletics Carnival	8 Life Education
Wk 5	11 Life Education Maths Competition	12 Life Education	13 Life Education	14 Life Education	15 Life Education
Wk 6	18 Life Education	19 Life Education	20 Life Education	21 Life Education	22 Life Education
Wk 7	25	26	27	28 Zone - Field	29 Zone - Track
SEPT Wk 8	1	2	3	4	5 Father's Day Stall
Wk 9	8	9	10	11	12
Wk 10	15	16	17	18	19
<b>HOLIDAYS - 20<sup>th</sup> September to 6<sup>th</sup> October</b>					
Term 4 OCT Week 1	6 Labour Day Holiday	7 STUDENTS & STAFF RETURN	8	9	10

## PRINCIPAL'S REPORT

Dear Parents,

**Mini-Mos:** WOW! Mini-Mos is here again. Preparation, preparation ... and now the day is nigh. Enjoy yourselves on Sunday. I wish all runners well and hope you make your PB's. If you see a volunteer or parent working on a stall don't forget to thank them. This wonderful event runs on the 'sweat and maybe some tears' of these wonderful volunteers.

**'Walk the Talk':** The SRC organise another important event, 'Walk the Talk'. It is said, 'a picture can replace a thousand words' and on Monday 2<sup>nd</sup> June this was clearly demonstrated. Thank you SRC, Ms Gates, Ms Hudson & Ms Pizzolato for organising this day and the photo shoot.





**Our captains represented MPS** at the Warringah Australia Remembers 72<sup>nd</sup> Commemorative Service. Emily quickly introduced herself to The Hon Tony Abbott MP and asked for a selfie. Mr Abbott was happy to oblige and asked about the upcoming Mini-Mos.

**Grandparent's Day:** Year 1 students and teachers are to be congratulated on their Grandparent's Day. Thank you to the grandparents, special visitors and parents who came along to view the extravaganza. As one grandparent said to me, "we didn't sing and dance like this when we were at school." It is such a fun day for all. So much has changed over the years. One grandad talked about his chore of 'fetching coal', a

little different from flipping a switch today. I even got into the reminiscing. "When I was teaching in my small one-teacher school it was so isolated. The only worldly connection was the telephone and the local exchange. This was all right if the operator wasn't having lunch or a natter over the back fence. Now small country schools are connected to the world and have the latest digital capabilities." Sorry about that.... Back to the fantastic day.... Beautiful classrooms, happy singing and even a poetry recital. **Thank You Year 1. A scrumptious morning tea was supplied by Year 1 parents, thank you.**



**NCCD (Nationally Consistent Collection of Data School Students with a Disability):** I have introduced this project in previous Whalers. For further information you can go to [www.education.gov.au/nationally-consistent-collection-date-school-students-disability](http://www.education.gov.au/nationally-consistent-collection-date-school-students-disability) This is a Government initiative which we are trialling this year. However, from next year all schools will need to complete a school data base.

This week Mrs Daffas and Mrs Tauber contacted parents of students who may have had support for learning during their time at MPS. This support, under the NCCD, is referred to as 'adjustments to learning'. They telephoned parents and outlined the NCCD and how it works for school students. From next year class teachers will have a conversation with parents and they will discuss how learning adjustments will be incorporated into the teaching and learning process.

One of the difficult parts of the program for some parents is the wording 'disability'. Some parents are comfortable with the classification but others may not be. Disability is a broad umbrella used in the identification process. If you need to discuss this further, please feel free to contact Mrs Daffas or myself.

If you were not contacted by Mrs Daffas or Mrs Tauber and you know your child has had adjustments to help in their learning, you may wish to contact me to discuss the inclusion of your child.

Thank you for your support and cooperation in this process.

**Movies and videos:** From time to time parents ask why we watch movies at school. Students watch movies during wet weather days. Students have the choice to watch a movie, draw, read or take part in a board game during the lunch session. The movies are **G Rated** for Kindergarten to Year 2 and **PG Rated** for Year 3 to Year 6 classes. The type of movie played can vary. As you can imagine, trying to keep 24-30 students entertained on wet weather days can be a challenge. However, it is amazing to hear the loud cheer that goes up when wet weather is called!

Students could also be viewing a movie as part of planned learning tasks. For example, students may have read 'Storm Boy' by Colin Thiele as a class novel and then watched the 1976 movie version as part of a comparison or as a 'Visual Text' exercise. **The new English K-10 Syllabus dictates that each year students must study examples of spoken texts, print texts, visual texts and media, multimedia and digital texts. Students must be given 'an appropriate range of digital texts, including film, media and multimedia.'** These experiences will be planned into students' English, HSIE or science programs.

Best wishes,  
Colin Cobcroft  
Acting Principal

### The Performing Arts

Performances are on the move at Mosman Public School. We all know that this is the motivation behind learning dance, drama or musical instruments. Thank you to all the students who are putting in an effort to be ready for solo and group performances.



Ana-Maria performed brilliantly at the 3 – 6 Assembly after an outstanding achievement in her Grade 3 flute exam.



Well, what about the Drama Group. They absolutely wowed the audience with their fast paced, action packed performance.



The Performance Band did an impromptu performance after their morning rehearsal with their conductor, Cheryl Oxley.



## Grandparent's Day

Congratulations Year One on a fabulous Grandparent's Day. Their performance was full of heartfelt joy at seeing their parents and grandparent's at school for the morning.



## The School Photographer Re-Order Photos

The following photographs will be on display in the office admin area, and may be ordered by completing a Re-Order envelope from the school office. Please place payment, either cash or cheque, in the envelope provided. Credit card payments can be made online through our website ([www.theschoolphotographer.com.au](http://www.theschoolphotographer.com.au)). Please enter your ORDER NUMBER on the envelope and return to the school office by Monday 21<sup>st</sup> July. **Please note, if payments are not received before photos are sent to the school, a late fee of \$5 will be incurred.**

Whole Year 6	\$14.00
Whole Year 6 Fun	\$14.00
School Captains	\$14.00



### **5 facts about strawberries**

1. Strawberries aren't actually berries, they are known as 'accessory fruits'
2. On average, strawberries have about 200 seeds
3. They're the only fruit with their seeds on the outside
4. They are a good source of Vitamin C
5. Most children love them!

**Why not pack strawberries for  
Crunch&Sip® this week?**

## COMMUNITY NEWS

Mosman Public School had great representation and great fun at the extremely well organised 2014 Term 2 NSTA Primary School Challenge Tennis on Saturday 31st May.

Stephanie Bruce and Madeleine Fry were pretty happy to win their division.



### Latest news

#### Chess class

The chess class at Mosman Public School runs on Friday afternoons from 3:15pm - 4:15pm.

If you are interested in joining the chess class, please contact the Sydney Academy of Chess on (02) 9745 1170 or email

[enrol@sydneyacademyofchess.com.au](mailto:enrol@sydneyacademyofchess.com.au).

#### Puzzle information

Answer Puzzle nr. 2:

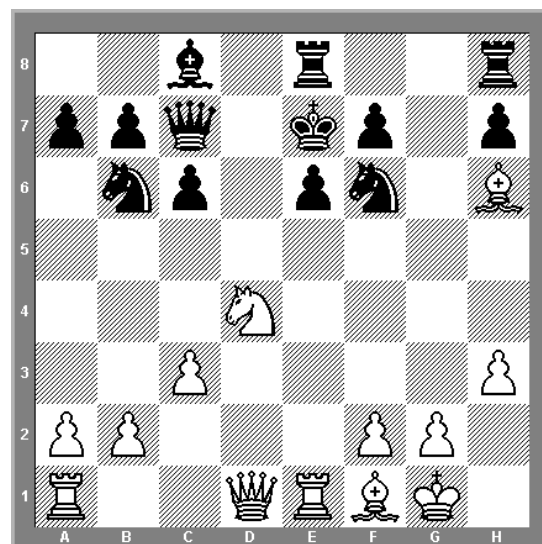
1. Bg5 #

#### Upcoming chess event

28 June: Pymble Saturday Fun Tournament

More information on events and coaching can be found on: [sydneyacademyofchess.com.au](http://sydneyacademyofchess.com.au)

### Chess puzzle



**Puzzle nr. 3:** White to play and checkmate in 1 move



### **Sunday 15 June is Mini-Mos**

Just an hour of your time, or a donation of some pre-loved items  
will help make the race and fair safe, fun and fantastic.

**Thank you for your help!**

**Register** [www.mini-mos.com](http://www.mini-mos.com)

**Volunteer** [volunteer@mosmanpublicpandc.org.au](mailto:volunteer@mosmanpublicpandc.org.au)

**Support Charities** [www.mycase.com.au/events/minimos](http://www.mycase.com.au/events/minimos)

**Donate to the Fair** [www.mosmanpublicpandc.org.au/2014-mini-mos/fair-donate/](http://www.mosmanpublicpandc.org.au/2014-mini-mos/fair-donate/)